



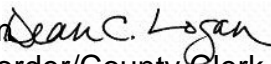
LOS ANGELES COUNTY REGISTRAR-RECORDER/COUNTY CLERK

DEAN C. LOGAN
Registrar-Recorder/County Clerk

February 1, 2024

TO: Supervisor Lindsey P. Horvath, Chair
Supervisor Hilda L. Solis
Supervisor Holly J. Mitchell
Supervisor Janice Hahn
Supervisor Kathryn Barger

C: Fesia Davenport, Chief Executive Officer

FROM: Dean C. Logan 
Registrar-Recorder/County Clerk

ELECTION STATUS UPDATE – MARCH 5, 2024 PRESIDENTIAL PRIMARY ELECTION

This report is to inform your Board of our preparation and operations for the March 5, 2024 Presidential Primary Election. The election status update supports the Department's ongoing commitment to fair, accessible, and transparent election services. There is an estimated 5.68 million registered voters for this election.

Vote by Mail

The Department will begin the initial mailing of Vote by Mail (VBM) ballots to all active registered voters on February 1st and will complete this process on February 5th. We will mail VBM ballots to voters who register before the close of registration deadline on February 20th. The Department encourages VBM as the safest and most convenient method for voting.

A variety of VBM resources are available on our [website](#). Voters may also request to receive their VBM ballot and materials in 19 different languages, sign up for [“Where’s My Ballot?”](#) to track their ballot, and request a replacement VBM ballot.

Vote by Mail Ballot Return Options

Voters have three options for returning a VBM ballot:

- (A) Ballot Drop Box: There are 416 Ballot Drop Box locations established for this election. Voters may return their VBM ballot at any Ballot Drop Box up to 8:00 PM on Election Day. Ballots are retrieved from Ballot Drop Boxes every 24 hours by authorized County staff. A list of the six Ballot Drop Box locations closest to the voter's address is included in the VBM packet. The Ballot Drop Box Locator Tool assists voters with finding a location and is available on our [website](#).
- (B) United States Postal Service (USPS): Voters may return their VBM ballot by mail using the postage-paid return envelope provided in their VBM packet. All VBM ballots returned must be postmarked on or before Election Day to qualify for the election. VBM ballots returned with a postmark on or before Election Day and received up to 7 days following the date of the election are legally valid for the election.
- (C) Vote Center: Voters may return their voted ballot at any Vote Center. Vote Centers are open daily from February 24th through March 5th between 10:00 AM – 7:00 PM, and on Election Day, 7:00 AM – 8:00 PM. A postcard listing the Vote Center locations nearest a voter's residence is mailed to every registered voter. The Vote Center Locator Tool assists with finding a location and is available on our [website](#).

In-Person Voting and Election Day at Vote Centers

Voting services will be available at the Registrar-Recorder/County Clerk (RR/CC) Headquarters in Norwalk beginning Monday, February 5th. In-person voting at the RR/CC Headquarters will be available Monday through Friday from 8:00 AM – 5:00 PM. On Election Day (March 5th), those hours are extended to 7:00 AM – 8:00 PM.

A total of 644 Vote Centers located across the County are secured and scheduled for this election. The first 119 Vote Centers open on Saturday, February 24th. On Saturday, March 2nd, an additional 525 Vote Centers will open. Vote Centers will be open daily from 10:00 AM – 7:00 PM before Election Day and 7:00 AM – 8:00 PM on Election Day. The Vote Center Locator Tool assists with finding a location and is available on our [website](#).

A Vote Center Mailer is sent to every registered voter listing the nearest 11-day location and the three nearest 4-day locations to their residence. The mailer also includes information on how voters can expedite their in-person experience using the Quick Check-In Code provided in the Sample Ballot or the Poll Pass and on options for returning VBM ballots. The distribution of Vote Center Mailers will be completed by February 17th.

Conditional Voter Registration (CVR) is a service through which any eligible voter can register and vote after the close of registration. CVR is available at all Vote Centers and at the RR/CC HQ. Through CVR, we can ensure that eligible voters have the opportunity to participate in the election.

Language Access

The Department is committed to providing election services in a fair, accessible, and transparent manner. Language Access is a critical priority to this mission and our services, operations, and processes reflect that commitment. The full range of election services is available in 19 languages, including Armenian, Chinese, Cambodian/Khmer, Farsi, Korean, Spanish, Tagalog/Filipino, Vietnamese, Hindi, Japanese, Thai, Russian, Bengali, Burmese, Gujarati, Indonesian, Mongolian, Telugu, and English. These services include the Sample Ballot, Vote by Mail ballot, Ballot Marking Device, Interactive Sample Ballot, Remote Accessible Vote by Mail, translated materials, and multilingual Election Workers.

A Language Outreach Mailer was sent in early September 2023 to approximately 5.3 million registered voters currently receiving their materials in English. The objective of this mailer was to educate and inform voters about the upcoming 2024 Presidential Primary Election and provide them with an opportunity to request a VBM ballot and election materials in any of the 19 supported languages. To date, the Department has updated the language preference for 6,496 voter records. Voters can update their language preference anytime by either calling (800) 815-2666, option 3, returning the Language Request Form on the back of their Sample Ballot Book, or by re-registering to vote.

Voter Education and Outreach for March 2024 Presidential Primary Election

To ensure residents and voters throughout Los Angeles County have the information they need to register and prepare to vote, the RR/CC has implemented a comprehensive multilingual public education and outreach campaign that kicked off on January 12, 2024. Through strategic outreach, community engagement, local and ethnic news partnerships, and targeted advertising, we aim to maximize voter turnout in the 2024 Primary Election and educate voters on the various ways to cast their ballot. Since the kick-off of our voter education and outreach program, our strategic advertisements and digital paid placements have been viewed or heard more than 5.6 million times. As we edge closer to Election Day, we this number will grow significantly as we increase volume and frequency of our messaging on promotion of voter registration, voting options, and persuading voters to make their voice heard.

To compliment the paid media program, the RR/CC is building a robust community and earned media plan to support and directly engage with our vast network of community-based organizations and local stakeholders, and local and ethnic media outlets to ensure they have what they need to educate voters about the upcoming election by using our Community Digital Toolkit. The toolkit is completely free, available in up to 18

different languages, and serves as the one-stop-shop for everything a community partner would need to conduct their voter mobilization efforts. To date, 230 unique community partners have visited our toolkit, earning more than 2,000 views, and there have been 143 unique downloads of our materials. In early-February, the RR/CC will host a webinar focused on teaching community partners on best practices of the toolkit, and to also receive their input on items we can add to make it more effective for our communities. To date, there are more than 50 RSVPs to the webinar.

To round out the voter education and outreach efforts the RR/CC has dedicated resources to conduct in-person voter outreach events across the County. These outreach efforts target various groups including college students, new citizens, justice involved, people experiencing homelessness, and many others. The RR/CC has partnered with UCLA and USC to provide voter registration workshops, trainings, and demonstrations. The RR/CC is committed to reaching and engaging new citizens. The outreach team regularly attends Naturalization ceremonies in Los Angeles County to welcome new citizens by providing voting information and registration.

Mobile Voting Program

Mobile, Flex, and Pop-Up Vote Centers are deployed across the County in each countywide election. We are targeting 90 Flex Vote Center events where we will deliver voting services to geographically isolated voters, seniors, voters with disabilities, people experiencing homelessness, justice-involved, and underserved communities. We are targeting 45 Mobile Vote Center events at a mix of large-scale, high-traffic events and locations with essential workers.

For contingency planning, we have five Pop Up Vote Center teams located across the County. These teams allow us to respond to emergencies at our Vote Centers and restore voting services. Mobile and Flex Vote Center resources serve as contingency teams on Election, which increases our contingency resources to twenty teams. These teams are deployed on an as-needed basis to assist with various issues such as equipment failure, staffing challenges, and expanding capacity at high turnout Vote Centers.

Voting While Incarcerated

The Department is committed to removing barriers and increasing access to voting for all eligible voters. Justice-involved individuals are encouraged to exercise their voting rights. Two dedicated programs are available for eligible voters incarcerated in Los Angeles County Jails. Vote by Mail is made available in partnership with the Los Angeles County Sheriff's Department. This program includes a voter registration effort in collaboration with LA Free the Vote that brings together the RR/CC, Sheriff's Department, Justice Care and Opportunities Department, and community stakeholders. VBM Ballots are distributed to registered voters and are returned to the RR/CC for counting.

For the first time, there will be in-person voting at all of our LA County jail facilities for the upcoming March Presidential Primary Election. An in-person voting in the jails program is conducted leveraging our Flex Vote Centers. This program is operated in partnership with the Sheriff's Department and has expanded with each election. Through this program, the RR/CC can bring the full range of voting equipment and services provided by our Vote Centers into the jail. This includes the Electronic Pollbook, Ballot Marking Device, Primary Ballot Crossover, and Conditional Voter Registration. This a unique program that reflects the Department's commitment to removing barriers and increasing voting access for all eligible voters in Los Angeles County.

Ballot Processing Center

The new Los Angeles County Ballot Processing Center (BPC) in the City of Industry is fully operational for the March 2024 Presidential Primary Election. This is a momentous accomplishment for the County and improves our ability to conduct fair, accessible, and transparent elections. Your Board supported this project in December 2022, and construction began in June 2023. The BPC officially opened for staff and operations on January 2, 2024. This BPC construction project was completed on budget and on schedule, which was made possible by collaboration with the Chief Executive Office and the Internal Services Department.

The BPC is a 144,000 sq ft. state-of-the-art operations center. The Department will receive ballots, verify signatures, extract and inspect ballots, scan and tally ballots, and conduct the official elections canvass at the BPC. With the completion of the BPC, the Department has co-located operations previously spread across four facilities. This colocation has created operational efficiencies and improvements to critical election operations. The Department estimates that over 740 staff will work out of the BPC during peak operations.

The Department is committed to ensuring accessibility and transparency in our operations. The Ballot Processing Center is a public facility and will be accessible during the public observation period for each election conducted in Los Angeles County. The facility has been designed to provide improved access and opportunities to observe for the public while maintaining the operational efficiency necessary to complete critical election operations.

Safety and security are paramount to maintaining accountability and ensuring the legitimacy of the election. A comprehensive security plan has been developed to protect staff, operations, and the facility. This security plan includes surveillance, fencing, onsite security, and cybersecurity monitoring and protection.

Departmental Resources and Contacts

Tools for Voters

The most important tool for voters is our website, www.lavote.gov. Here they can check their voter registration, check the status of their Vote by Mail Ballot (VBM), find a Vote

Center or VBM Ballot Drop Box, access their Interactive Sample Ballot, and follow live election results on Election Night. We encourage you to share these resources with voters who call your Office. Key tools for this election include:

- Voter Information Page:* This can be found on our website under [Find My Election Info](#). This page helps voters check their registration status, look up their sample ballot, and access other helpful election information.
- Information for No Party Preference Voters:* This resource can be found on our website under [Information for No Party Preference Voters](#). This page provides critical information for voting in a Presidential Primary Elections as No Party Preference voter.
- Interactive Sample Ballot:* This allows voters to view and mark their sample ballot utilizing an electronic device. The [Interactive Sample Ballot](#) generates a Poll Pass, which helps expedite the in-person voting process.
- BallotTrax:* This is linked on our website under [Voting by Mail in Los Angeles County](#). It allows voters to track their VBM Ballot. Voters can sign up to be notified when their ballot is sent, received, and counted.
- Make a Plan to Vote Tool:* This tool allows voters to register to vote, check their registration information, track their ballot, and review their voting options in one secure location. After a voter completes their plan, they will receive timely and relevant messages to help them cast their [ballot](#).

Contact Information for Voters

Phone: (800) 815-2666
Email: voterinfo@rrcc.lacounty.gov
Website: www.lavote.gov

Resources for Media/Communications Deputies

[Election Results](#)
[Fact Sheets](#)
[Press Releases](#)
[Outreach Toolkit](#)

Media/Communications Contact

Michael Sanchez, Communications Manager
562-462-2648 – office
562-274-3938 – mobile
msanchez@rrcc.lacounty.gov

Election Contact

We appreciate the partnership with your Office in our efforts to serve voters and allow them to exercise their fundamental right to vote. The Department will provide your respective Offices with a dedicated contact for this election. If you have any questions, please contact Adrian Avelar, Executive Assistant, at (562) 345-8372 or aavelar@rrcc.lacounty.gov for any urgent or pressing matters.

DCL:AA:cc



**LOS ANGELES COUNTY
REGISTRAR-RECORDER/COUNTY CLERK**

VOTING IN LOS ANGELES COUNTY UNDERSTANDING YOUR OPTIONS IN A PRESIDENTIAL PRIMARY ELECTION



Key Dates to Remember

December 1, 2023

No Party Preference Notice Mailing

Every No Party Preference voter is mailed a notice to inform them of their registration and to provide options on how to vote for a presidential candidate in the Presidential Primary Election.

February 1, 2024

Vote by Mail Ballot Mailing

In California, Vote by Mail ballots must be mailed at least 29 days before Election Day. Given the size of Los Angeles County, ballots in a Countywide election are often mailed before the required deadline.

February 24, 2024

Initial Vote Centers Open

In-person voting at a Vote Center will begin on Saturday, February 24, 2024. Vote Center locations will be open daily.

March 2, 2024

All Vote Centers Open

All Vote Center locations are open through Election Day, March 5, 2024. Hours and locations will be available on [LAVOTE.GOV](https://www.lavote.gov).

January 25, 2024

Sample Ballots and Voter Information Guides Mailing

The California Secretary of State and Los Angeles County Registrar-Recorder/County Clerk sends every registered voter a Voter Information Guide and Sample Ballot Book containing important election and voting information on candidates and measures.

February 20, 2024

Voter Registration Deadline

This is the last day for eligible voters to register to vote and be mailed a Vote by Mail ballot. Eligible voters who miss this deadline can still vote at any Vote Center beginning February 24, 2024.

February 27, 2024

Last day to request a Vote by Mail ballot

This is the last day voters can request a replacement ballot or request a Crossover Vote by Mail ballot

March 5, 2024

Election Day

Participate in the primary election of your chosen party on the designated day.



Have questions?

Call us at (800) 815-2666 or email VoterInfo@rrcc.lacounty.gov

[LAVOTE.GOV](https://www.lavote.gov)



**LOS ANGELES COUNTY
REGISTRAR-RECORDER/COUNTY CLERK**

VOTING IN LOS ANGELES COUNTY UNDERSTANDING YOUR OPTIONS IN A PRESIDENTIAL PRIMARY ELECTION



Make a Plan to Vote Checklist

1. Register to vote! You can register to vote if you are a U.S. Citizen, 18 years of age, live in California, are not currently found mentally incompetent to vote by a court, and not currently serving a State or Federal prison term for a felony conviction.
2. Check your voter registration status. If you have recently moved or changed your name you may need to update your voter registration information.
3. Review the current and upcoming election information and your voting options on our official website **LAVOTE.GOV**.
4. Contact our office if you have a question. Dedicated staff are available to answer your questions. You can use the chatbot on **LAVOTE.GOV** or call (800) 815-2666 to speak to a representative.



Why Your Political Party Preference is Important in This Election

The political party preference you selected when you last registered to vote determines which presidential candidates will be on your ballot.

For example: if you're registered with the Democratic Party, you'll see the Democratic Presidential candidates; if you're registered with the Republican Party you will see the Republican Presidential candidates.

If you did not select a political party preference when you last registered then you are considered a **No Party Preference voter**. If you want to vote for a Presidential candidate, you must notify our office and request a party's ballot.



Have questions?

Call us at (800) 815-2666 or email VoterInfo@rrcc.lacounty.gov

LAVOTE.GOV



LOS ANGELES COUNTY
REGISTRAR-RECORDER/COUNTY CLERK

VOTING IN LOS ANGELES COUNTY UNDERSTANDING YOUR OPTIONS IN A PRESIDENTIAL PRIMARY ELECTION



How No Party Preference Voters Can Request a Party's Ballot

Political parties determine whether No Party Preference voters can vote for their party's presidential candidates. This is known as "crossover" voting.

OPEN PARTIES

American Independent, Democratic, Libertarian

- **Crossover Allowed:** Voters registered as No Party Preference can request an **American Independent, Democratic, or Libertarian** party's ballot and vote for one of their presidential candidates.
- **How to Request a Party's Ballot:**
 - ✉ **Mail Notice:** All registered No Party Preference voters are mailed a notice informing them of their options - complete and return the Crossover Ballot Request Form as soon as possible
 - 🖱 **Online:** Fill out and complete the online application available at **LAVOTE.GOV**
 - 📞 **Phone:** You may call (800) 815-2666 and **speak to a representative**
 - @ **Email:** You can scan and send a copy of your mailed notice to **VoterInfo@rrcc.lacounty.gov**
 - 📠 **Fax:** You can return your mailed notice by fax at (562) 232-7924 and (877) 614-1127
- **Deadline to Request a Vote by Mail Ballot:** The last day you can request a Crossover ballot (or a replacement Vote by Mail ballot) is February 27, 2024.
- **California Requirement:** State law requires you to provide and confirm your personally identifiable voter registration information to complete the Crossover ballot request.

CLOSED PARTIES

Green, Peace & Freedom, Republican

- **Party Affiliation Required:** Voters must be registered with the **Green, Peace and Freedom or Republican** parties to vote for their presidential candidates.
- **No Crossover:** Voters registered with No Party Preference and want to receive a ballot for one of these parties must change their party preference by re-registering to vote.
- **How to Re-register to Vote:**
 - 🖱 **Online:** You can re-register online at **RegisterToVote.ca.gov**
 - 📍 **Paper application:** Registration applications are available at most government buildings such as a Post Office, library, the Department of Motor Vehicles (DMV), and RR/CC offices throughout Los Angeles County.
- **Deadline to re-register with a party to receive a Vote by Mail ballot:** Voters must update their party preference by February 20, 2024, to receive a Vote by Mail ballot. Anyone who misses this deadline, can still visit any Vote Center and vote for one of these party's Presidential candidates.



Have questions?

Call us at (800) 815-2666 or email VoterInfo@rrcc.lacounty.gov

LAVOTE.GOV



**LOS ANGELES COUNTY
REGISTRAR-RECORDER/COUNTY CLERK**

VOTING IN LOS ANGELES COUNTY UNDERSTANDING YOUR OPTIONS IN A PRESIDENTIAL PRIMARY ELECTION



Frequently Asked Questions

1. How can I check my party preference?

Check your voter registration status to see the political party you are registered with at www.lavote.gov/vrstatus

2. Can I choose any political party preference?

Yes. You can choose from the six qualified political parties on the registration form. These are the parties that will hold their presidential primaries on March 5, 2024.

3. Can I change my party preference to vote for a different presidential candidate?

Yes. To do so, you will need to re-register to vote with a new party. Through February 20, any voter can register to vote online or fill out a paper registration form. On Election Day, you can change your party preference at a Vote Center. Remember, you may vote in only one party's primary election.

4. Do I need to choose a political party preference?

No. If you choose to register with no party preference, you can still get a ballot with the presidential candidates of some parties, but not all. Your party preference does not affect your ability to vote for any other contests on the ballot.

5. If I have no party preference, how can I vote for presidential candidates?

As a voter with no party preference, you will get a nonpartisan ballot with no presidential candidates unless you request a crossover ballot of one of the parties that will allow voters with no party preference to participate in their presidential primaries.



Have questions?

Call us at (800) 815-2666 or email VoterInfo@rrcc.lacounty.gov

LAVOTE.GOV



LOS ANGELES COUNTY REGISTRAR-RECORDER/COUNTY CLERK

VOTING IN LOS ANGELES COUNTY UNDERSTANDING YOUR OPTIONS IN A PRESIDENTIAL PRIMARY ELECTION



No Party Preference Mailer Guide

If you want your March 5, 2024 Presidential Primary Election ballot to include Presidential candidates YOU MUST notify our office. Your options depend on the party whose candidates you want on your ballot.

ABOUT THE PRESIDENTIAL PRIMARY ELECTION

In a Presidential Primary Election, the political parties determine whether voters registered with No Party Preference can vote for their party's presidential candidates. This is known as "crossover" voting.

REVIEW YOUR OPTIONS:

The American Independent Party, Democratic Party, and Libertarian Party allow No Party Preference voters to crossover and request their party's ballot.

The Green Party, Peace & Freedom Party, and Republican Party require voters to be registered with their party to vote for their presidential candidates.

HOW TO REQUEST A PARTY'S BALLOT:

AMERICAN INDEPENDENT PARTY	GREEN PARTY
DEMOCRATIC PARTY	PEACE & FREEDOM PARTY
LIBERTARIAN PARTY	REPUBLICAN PARTY

Return the Crossover Ballot Request Form*

Attached to this mailer is a Ballot Request Form. Fill in your choice and place the card back into the mail, or

Apply Online

Visit LAVOTE.GOV or scan the QR Code.

Re-register Online

To update your party preference visit LAVOTE.GOV or scan the QR Code, or call (800) 815-2666, option 1.

Update Your Voter Registration

To receive a Vote by Mail ballot for one of these parties you must change your party preference by re-registering to vote.

State Multilingual Hotlines:

English: (800) 345-VOTE (8683)
Spanish: (800) 332-VOTA (8642)
Chinese: (800) 339-2857

Hindi: (888) 345-2692
Japanese: (800) 339-2865
Korean: (888) 345-4912

Tagalog: (800) 339-2957
Thai: (855) 345-3933
Vietnamese: (800) 339-8183
TTY/IDV: 711



Return your request form

If you decide to request a ballot for **American Independent Party, Democratic Party, OR Libertarian party**, the mailer comes with the option to fill out and return a request form. Once completed, simply detach the postcard and drop it in the mail, no postage required.



Review your options

In a Presidential Primary Election, the political parties determine whether voters registered with No Party Preference can vote for their party's presidential candidates. This is known as "crossover" voting.

The **left side** of the mailer gives instructions on how to request a ballot for one of the open Parties: **American Independent Party, Democratic Party, OR Libertarian Party**. This action will not register you with the selected party.

The **right side** of the mailer gives instructions on how to re-register to vote in order to receive a Primary Election ballot for one of the closed Parties: **Green Party, Peace & Freedom Party, OR Republican Party**. This action will register you with the selected party.

CROSSOVER BALLOT REQUEST FORM

I am currently registered to vote with **NO PARTY PREFERENCE**. For the March 5, 2024 Presidential Primary Election, I request a ballot that includes the Presidential contest for the party selected below:

First name, Middle name, and Last name
Residence Address

9999999999

SELECT ONLY ONE

☐ American Independent Party ☐ Democratic Party ☐ Libertarian Party

Must be signed by applicant to be processed

Signature: _____ Date: _____

Date of birth: _____ Phone (optional): _____

Email (optional): _____

By submitting your email and phone numbers, you authorize us to update your voter registration record.
The Crossover Ballot Request Form is also accepted by email or facsimile transmission.
Phone: (800) 815-2666 | Email: VoterInfo@rrcc.lacounty.gov | Fax: (310) 232-7924 and (310) 614-1127



Have questions?

Call us at (800) 815-2666 or email VoterInfo@rrcc.lacounty.gov

LAVOTE.GOV



Los Angeles County
Registrar-Recorder/County Clerk

LANGUAGE REQUEST FORM

To continue receiving your ballot and election materials in English, no action is needed.

To make your language preference, mark the form below and drop this card in the mail.

First name, Middle name, and Last name



999999999

Please send me a ballot in the language I have checked below:

- | | | |
|--|--|---|
| <input type="checkbox"/> Spanish (Español) | <input type="checkbox"/> Gujarati (ગુજરાતી) | <input type="checkbox"/> Farsi (فارسی) |
| <input type="checkbox"/> Chinese (中文) | <input type="checkbox"/> Bengali (বাংলা) | <input type="checkbox"/> Thai (ภาษาไทย) |
| <input type="checkbox"/> Korean (한국어) | <input type="checkbox"/> Khmer (ភាសាខ្មែរ) | <input type="checkbox"/> Mongolian (монгол) |
| <input type="checkbox"/> Japanese (日本語) | <input type="checkbox"/> Tagalog (Tagalog) | <input type="checkbox"/> Armenian (հայերեն) |
| <input type="checkbox"/> Russian (Русский) | <input type="checkbox"/> Vietnamese (Tiếng Việt) | <input type="checkbox"/> Telugu (తెలుగు) |
| <input type="checkbox"/> Hindi (हिन्दी) | <input type="checkbox"/> Indonesian (Bahasa Indonesia) | <input type="checkbox"/> Burmese (မြန်မာစာ) |

Visit LAVOTE.GOV or call (800) 815-2666, option 3 for more information.

Detach
Detach

PLEASE READ IMPORTANT ELECTION INFORMATION ENCLOSED



ELECTRONIC SERVICE REQUESTED

County of Los Angeles
Registrar-Recorder/County Clerk
P.O. Box 30450
Los Angeles, CA 90030-0450

NON-PROFIT ORG.
U.S. POSTAGE
PAID
LOS ANGELES
COUNTY REGISTRAR-
RECORDER/COUNTY
CLERK



Attention Voter

MAKE A PLAN TO VOTE IN THE MARCH 5, 2024 PRESIDENTIAL PRIMARY ELECTION



You will be mailed a ballot no later than February 5, 2024



Ballot Drop Boxes are open on the same day we begin mailing ballots



Vote Centers are open 10 days before and on Election Day, March 5, 2024



You can visit any Vote Center to vote or return your mailed ballot



Los Angeles County provides translated materials in 18 different languages



The Registrar-Recorder/County Clerk is the official source for election information

Follow the instructions inside to request your ballot in your preferred language

Atención Votante: Siga las instrucciones del manual para solicitar su boleta electoral en el idioma de su preferencia.

選民請注意：請依照隨附的指示申請依您偏好的語言製作的選票。

알림: 안내사항에 따라 원하는 언어의 투표용지를 요청해 주십시오.

投票者への注意事項: 同封物に記載された指示に従うことで、ご希望の言語に翻訳された投票用紙をリクエストすることができます。

Вниманию избирателя: для получения бюллетеня на своем предпочитаемом языке следуйте инструкциям внутри.

मतदाता ध्यान दें: अपनी पसंदीदा भाषा में अपने मतपत्र का अनुरोध करने के लिए अंदर दिए गए निर्देशों का पालन करें।

मतदाता ध्यान दें: तमारी पसंदीदानी भाषामें तमारी मतपत्रनी दिनतली करवा माठे अंदर आपले सूचनाथोले अनुसरें.

ভোটাভাৱা খেয়াল কৰুন: আপনাৰ পছন্দৰ ভাষায় আপনাৰ ব্যালটটি পতে ভেতৰেৰে নিৰ্দেশনা অনুসৰণ কৰুন।

អ្នកបោះឆ្នោតសូមយកចិត្តទុកដាក់៖ ធ្វើតាមការណែនាំខាងក្នុងដើម្បីស្នើសុំសន្លឹកឆ្នោតរបស់អ្នកជាភាសាដែលអ្នកចង់បាន។

Paunawa sa Botante: Sundin ang mga tagubilin sa loob para humiling ng iyong balota sa iyong gustong wika.

Cử tri chú ý: Thực hiện theo các hướng dẫn bên trong để yêu cầu lá phiếu của bạn bằng ngôn ngữ ưa thích của bạn.

Perhatian untuk Pemilih: Ikuti instruksi di dalam untuk meminta surat suara dalam bahasa pilihan Anda.

قابل توجه رأی دهندگان: برای درخواست برگه رأی به زبان ترجیحی‌تان، دستورالعمل‌های داخل را دنبال کنید.

เรียนผู้ออกเสียงลงคะแนน: ปฏิบัติตามคำสั่งด้านในเพื่อขอบัตรลงคะแนนเสียงเป็นภาษาที่คุณต้องการ

Сонгогчдын Анхааралд: Саналын хуудсыг өөрийн сонгосон хэлээр авах хүсэлт гаргах бол дотор байгаа зааврыг дагана уу.

ឯកហុកព្យាបាលបោះឆ្នោត: អ្នកបោះឆ្នោតត្រូវអនុវត្តតាមការណែនាំខាងក្នុងដើម្បីស្នើសុំសន្លឹកឆ្នោតរបស់អ្នកជាភាសាដែលអ្នកចង់បាន។

ఓటర్ సావధానం: మీరు ఇష్టపడే భాషలో మీ బ్యాలట్ అభ్యర్థనకు లోపల సూచనలను అనుసరించండి.

မဲပေးသူ သတိပြုရန်- သင်နှစ်သက်ရာ ဘာသာစကားဖြင့် မဲပေးလွှာကို တောင်းဆိုရန် အတွင်းရှိညွှန်ကြားချက်များအတိုင်း လုပ်ဆောင်ပါ။

To continue receiving your ballot and election materials in English, no action is needed.

RETURN ADDRESS



NONPROFIT ORG.
U.S. POSTAGE
PAID
LOS ANGELES
COUNTY REGISTRAR-
RECORDER/COUNTY
CLERK



REGISTRAR-RECORDER/COUNTY CLERK
VOTE BY MAIL UNIT
PO BOX 30450
LOS ANGELES CA 90030-0450

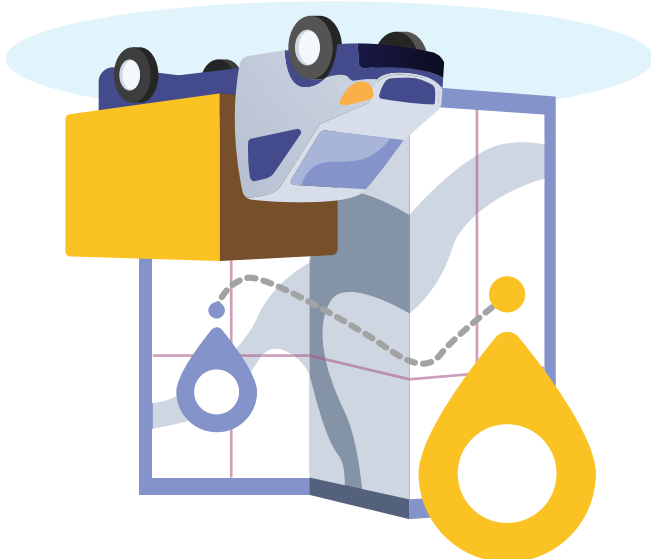


Detach

You can update your registration information by re-registering online at LAVOTE.GOV or calling (800) 815-2666, option 2.

Update your voter registration information with your correct residence address and mailing address.

Scan the QR Code to check or update your registration information.



Have you moved recently?

။ ဂြိုဟ်ဂြိုဟ်နဲ့ ဝှံ့ဝှံ့ဝှံ့ဝှံ့ ဝှံ့ဝှံ့ဝှံ့ဝှံ့ ဝှံ့ဝှံ့ဝှံ့ဝှံ့
ဝှံ့ဝှံ့ဝှံ့ဝှံ့ ဝှံ့ဝှံ့ဝှံ့ဝှံ့

[illegible]

• လူငယ်တို့အား ကုလ
လေ့ကျင့်ရေး ကျောင်းမှ ဖွဲ့စည်း ကုလ
• ဗမာ့အလင်း နှင့် အခြား မီဒီယာ ကဏ္ဍ
• ဗမာ့အလင်း ကုမ္ပဏီ ကုမ္ပဏီ
• ဗမာ့အလင်း ကုမ္ပဏီ ကုမ္ပဏီ
• ဗမာ့အလင်း ကုမ္ပဏီ ကုမ္ပဏီ

Հիսիեզ Գժմսդըմըդ ւք
Գժմսդդմս միվեմքեդիմ
ւք մս Դքմնդլ ժք Նսմի ժսս
:Ճք քդոսի դլմ ժ,քն դ
մդրսքսմսդըմըդ վիեզ ւք
ժքմստի Ճք քդրսքն ճվի

Өөрийн нийгэмд үйлдэх хэрэгсэл
хавсаргасан өргөтгөлд
тэмдэглээд үнэт өгөөдэй.

ឧបនាយករដ្ឋមន្ត្រី
នាយករដ្ឋមន្ត្រី
លោកជំទាវ
សម្តេចហ៊ុន សែន

میتواند از آن جهت که در این کتاب آمده است و به هر حال
در این کتاب آمده است و به هر حال

Tandai bahasa pilihan Anda
pada aplikasi terlampir
dan kirim lewat pos.
Anda dapat meminta surat suara
dalam bahasa pilihan Anda.

Đánh dấu ngôn ngữ ưu tiên
của quý vị trên đơn kèm
theo và gửi qua thư tín.

Markahan ang nais mong wika
sa nakalakip na aplikasyon
at ihulog ito sa koreo.
Maaari mong hilingin ang iyong
balota sa iyong gustong wika.

៤. ឧបត្ថម្ភអំពីលក្ខណៈ
 ប្រតិបត្តិការរបស់អង្គការស្តីពីការអភិវឌ្ឍន៍
 ៤. យើងគួរតែពិនិត្យការងាររបស់អង្គការ
 លើកលែងតែការងារដែលមានលក្ខណៈ

।।ପ୍ରାୟଶ୍ଚିତ୍ତ।।
।।ପ୍ରାୟଶ୍ଚିତ୍ତ।।

[illegible]

समग्र आबदेन में अपना पसंदीदा भाषा पर
नमज़ान लगाएँ और इसे डाक में डाल दें।
आप अपने मतपत्र का अनुरोध अपनी
पसंदीदा भाषा में कर सकते हैं।

**Отметьте свой язык на
приложенном заявлении и
отправьте его по почте.**

い、睡眠して、
の申請書も書き、
の希望の言語に翻訳された投票用紙をリクエスできます。

2017년 12월 15일
 서울특별시 강남구 테헤란로 152
 삼성생명빌딩 15층 1515호
 삼성생명빌딩 15층 1515호

請在隨附的申請表中標記您的
偏好語言，並放入郵件中。
您可以申請依您偏好的
語言製作的選票。

Por favor, marque el idioma de su preferencia en la solicitud adjunta y envíela por correo. Puede solicitar la boleta electora en su idioma de preferencia.

You can request your ballot in your preferred language



Official Information

LOS ANGELES COUNTY REGISTRAR-RECORDER/COUNTY CLERK MARCH 5, 2024 PRESIDENTIAL PRIMARY ELECTION

A VOTE BY MAIL BALLOT HAS BEEN ISSUED TO EVERY REGISTERED VOTER

Options for returning your Vote by Mail ballot



RETURN BY MAIL

Must be postmarked by Election Day.
No postage required.



RETURN AT A VOTE BY MAIL BALLOT DROP BOX LOCATION

Full list of drop box locations available in your
Vote by Mail packet or at [LAVOTE.GOV/DROPBOX](https://lavote.gov/dropbox)
prior to each election.



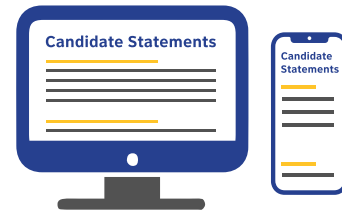
DROP OFF AT ANY VOTE CENTER LEADING UP TO AND ON ELECTION DAY

Vote Centers near your residence are printed
on this mailer. Full list of Vote Centers
available at [LOCATOR.LAVOTE.GOV](https://locator.lavote.gov).

Candidate Statements Go Digital

Candidate statements are now available at your
fingertips! In addition to a printed statement in the
Sample Ballot Book, candidates running for County
and Local offices now have the option to submit
statements online.

Stay informed, and view candidate statements
online at **LAVOTE.GOV**



Make your selections before leaving the house

The **Interactive Sample Ballot** is an optional tool
that allows you to access, review and mark your
selections before going to a Vote Center.

1

Visit [LAVOTE.GOV/ISB](https://lavote.gov/isb)

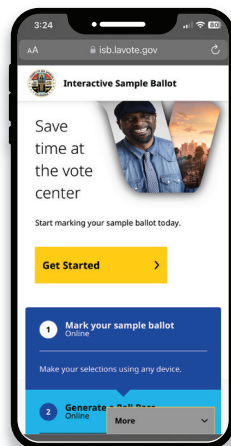


2

Enter your information
and make your selections

3

Scan your Poll Pass
(QR Code) on the Ballot
Marking Device at any
Vote Center



Why Your Political Party Preference is Important in this Election

The political party preference you selected
when you last registered to vote determines
which Presidential candidates will be on your
Vote by Mail ballot.



If you are not registered with a political party,
then you are known as a **No Party Preference**
voter and were mailed a nonpartisan ballot
that does not include Presidential candidates.



If you are a No Party Preference voter and
want your ballot to include Presidential
candidates you must complete a few
additional steps.

Scan this QR Code,
visit [LAVOTE.GOV](https://lavote.gov), or
call (800) 815-2666,
option 2 for options.



Visit [LAVOTE.GOV](https://lavote.gov) for trusted election information and resources

Los Angeles County
Registrar-Recorder/County Clerk
P.O. Box 30450
Los Angeles, CA 90030-0450

ELECTRONIC SERVICE REQUESTED

NONPROFIT ORG.
U.S. POSTAGE
PAID
COUNTY OF LOS
ANGELES REGISTRAR
RECORDER COUNTY
CLERK

PLEASE READ IMPORTANT ELECTION INFORMATION ENCLOSED



*Vote Centers are subject to change. Visit LAVOTE.GOV for the most up-to-date list of Vote Centers in Los Angeles County.



TAKE YOUR QUICK CHECK-IN
CODE WITH YOU TO
ANY VOTE CENTER IN
LOS ANGELES COUNTY

March 2nd – March 5th

February 24th – March 5th

Vote Centers Near Your Residence:
Hours: 10 AM - 7 PM, Election Day: 7 AM - 8 PM

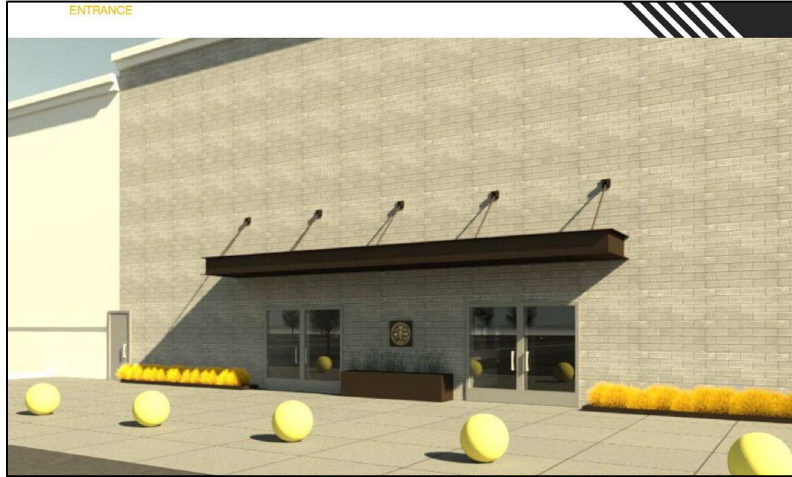


Los Angeles County Ballot Processing Center

13401 Crossroads Parkway North
City of Industry, CA 91746



Exterior: Building



Exterior: Building



Lobby (Facilities – Observer Loop)

Reception:

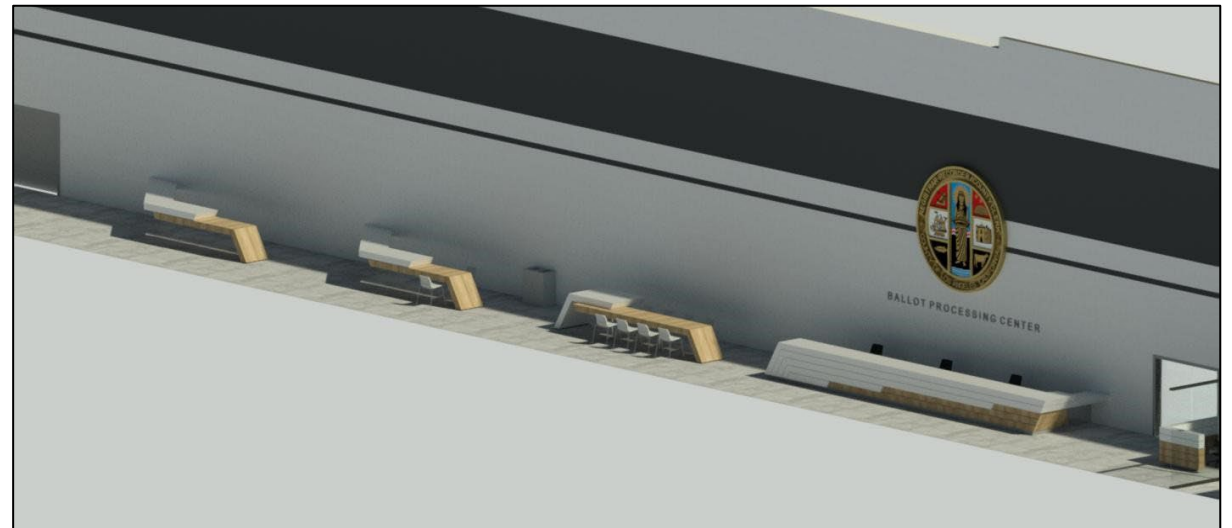
- 3 hoteling stations, no PC set-up
- County seal wall graphic
- Media, observers point-of-contact area
- Virtual receptionist PC, monitor, webcam

Security:

- 1 PC, 1 monitor, 1 phone
- 1 security camera monitor
 - Monitors indoor & outdoor cameras
- Small printer
- 24/7 guard on-duty
- Intrusion alarm monitoring and panel
- PA system access

Community Space:

- Counter, ADA accessible, USB connections
- Future planning: Wall graphic



Vote by Mail Processing



Election Tally



Electon Command Center



Training/Media Room

