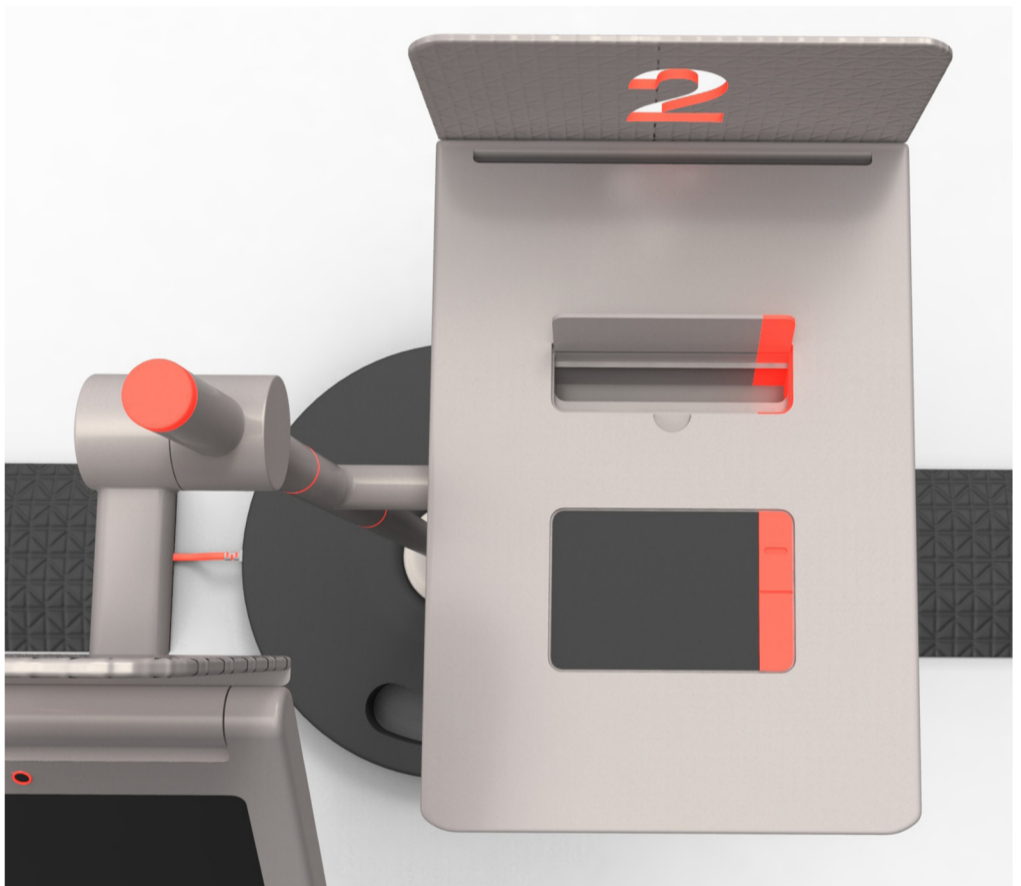
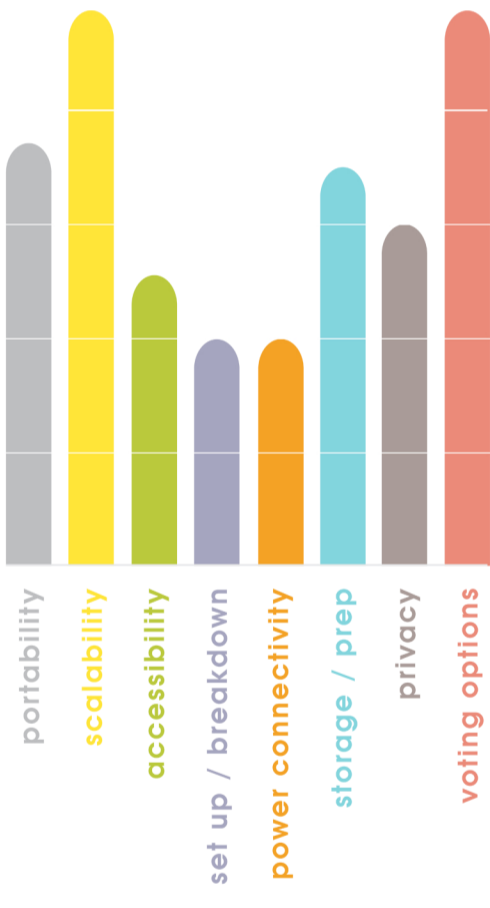


Concept 3

Three Easy Steps

Three Clear Steps allows people to take very clear and distinctive actions at each stage of the voting process. By decentralizing the system, people can visibly see what is expected from beginning to end. With fewer points of interface as each stage, the experience becomes easier and less intimidating.

For poll workers, lightweight components make it easier to transport, support and swap parts out if necessary on Election Day, eliminating downtime. In addition, the scalability of the system allows LA County to project ahead and pivot as needs change.



Next Steps

Technical / Mechanical Considerations

- ➔ Explore mechanical functions for stands and device clamps
- ➔ Explore printer / scanner devices. Ink delivery systems i.e., thermal printing, inkjet, laser

Design / Ergonomic Considerations

- ➔ Explore station identification
- ➔ Explore station configurations
- ➔ Explore color, material and finish
- ➔ Refine industrial design

Usability / Cognitive Understandings

- ➔ Explore step-by-step interactions
- ➔ Explore privacy threshold

Principles to Consider

- ➔ Cost
- ➔ System / Boot Requirements
- ➔ Integrity
- ➔ Instill Public Trust
- ➔ Voter Ease of Use
- ➔ Transparency